

30/206

DK 30 P&S 20 THRU 32

SUGAR POND MANOR OF WELLINGTON

IN PART OF SECTIONS 4, 5, 8, 9, 16 & 17, TWP. 44 S., RGE. 41 E.

PALM BEACH COUNTY, FLORIDA

IN 13 SHEETS SHEET NO. 5

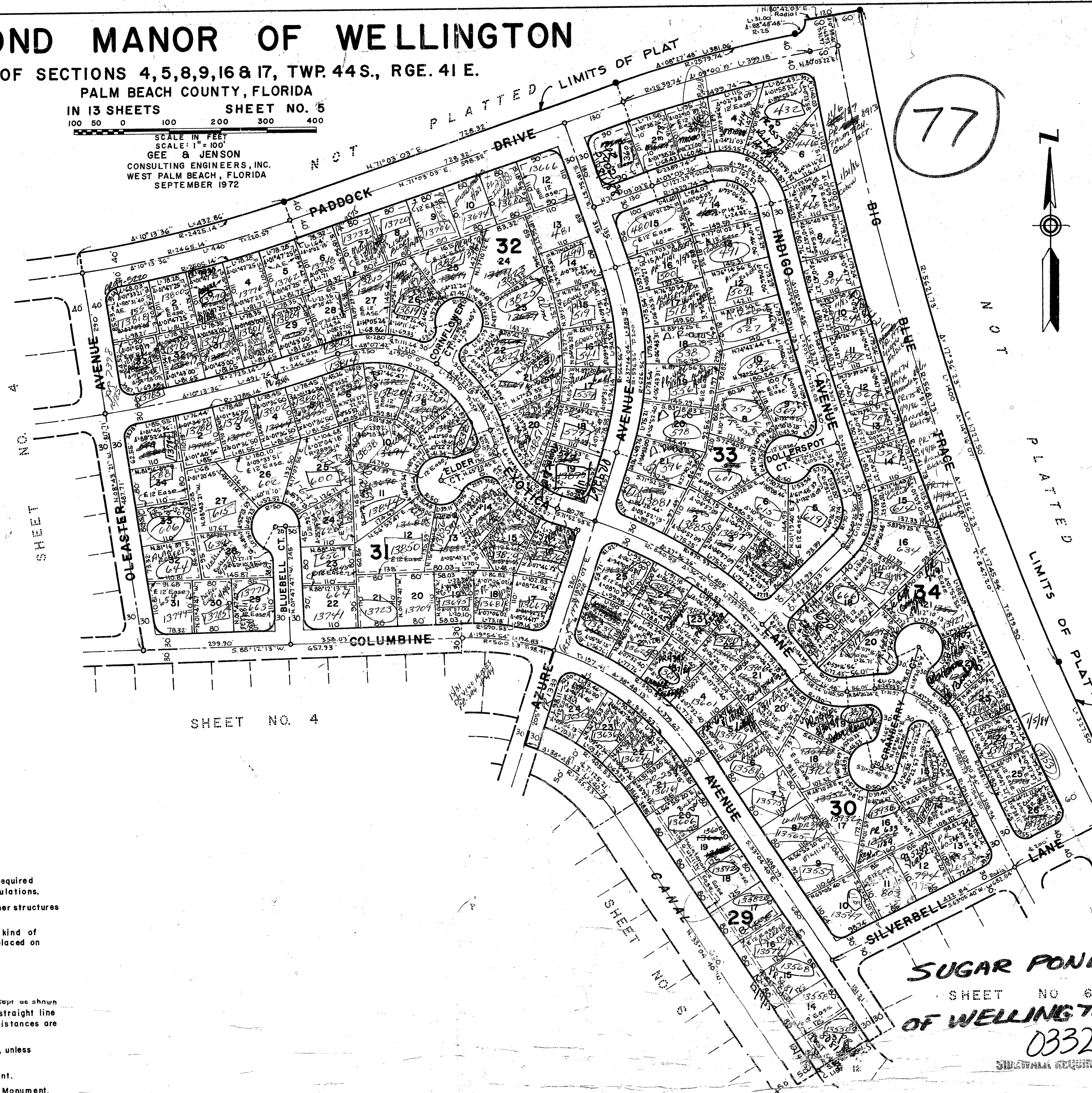
100 50 0 100 200 300 400

SCALE IN FEET

SCALE: 1" = 100'

GEE & JENSON
CONSULTING ENGINEERS, INC.
WEST PALM BEACH, FLORIDA
SEPTEMBER 1972

24



77



STATE OF FLORIDA
 COUNTY OF PALM BEACH
 This Plat was filed for record at _____ M.
 this _____ day of _____, 1973,
 and duly recorded in Plat Book No. _____
 on page _____
 JOHN B. DUNKLE, Clerk Circuit Court
 By _____, D.C.

NOTE

Building Setback Lines shall be as required by Palm Beach County Zoning Regulations.
 There shall be no buildings or other structures placed on Utility Easements.
 There shall be no buildings or any kind of construction or trees or shrubs placed on Drainage Easements.

NOTE

All corner lot radii are 25 feet except as shown and the lot dimensions are to the straight line intersections, except where arc distances are shown.
 Easements are for Public Utilities, unless otherwise noted.
 ○ denotes Permanent Control Point.
 ● denotes Permanent Reference Monument.
 A.E. denotes Anchor Easement.

SIDEWALK REQUIRED

TURNOUT REQUIRED

SUGAR POND MANOR
 SHEET NO. 6
OF WELLINGTON

0332-332 30/24
 SHEETS

SIDEWALK REQUIRED